



International Baccalaureate®
Baccalauréat International
Bachillerato Internacional

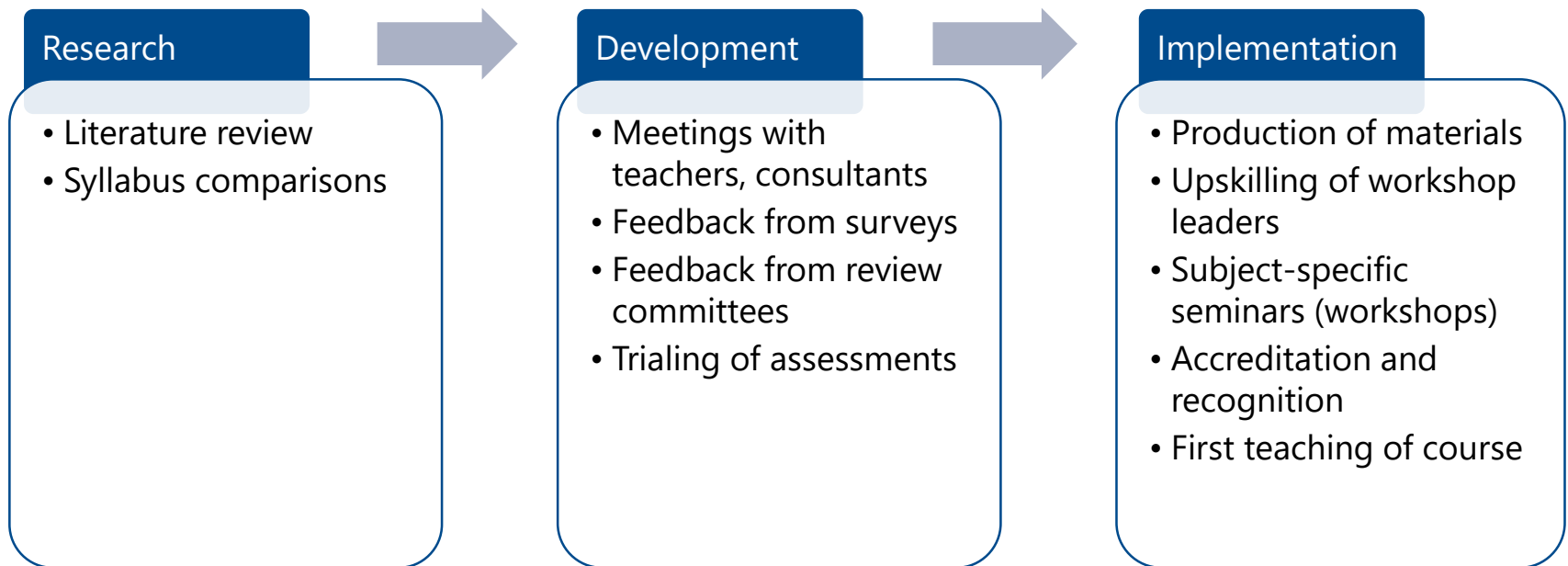
Curriculum review, the DP Core and how new courses are born

Darlyne Delaney, Curriculum Manager: Language Acquisition
5 March, 2019

DP Curriculum Review

Each DP course and core element has a seven-year curriculum review cycle

- Two-year research phase
- Three-year development phase
- Two-year production and implementation phase



DP Core curriculum review

- TOK: first teaching 2020; first assessment 2022
- EE: first teaching 2016; first assessment 2018
- CAS: publication 2015; candidates graduating 2017

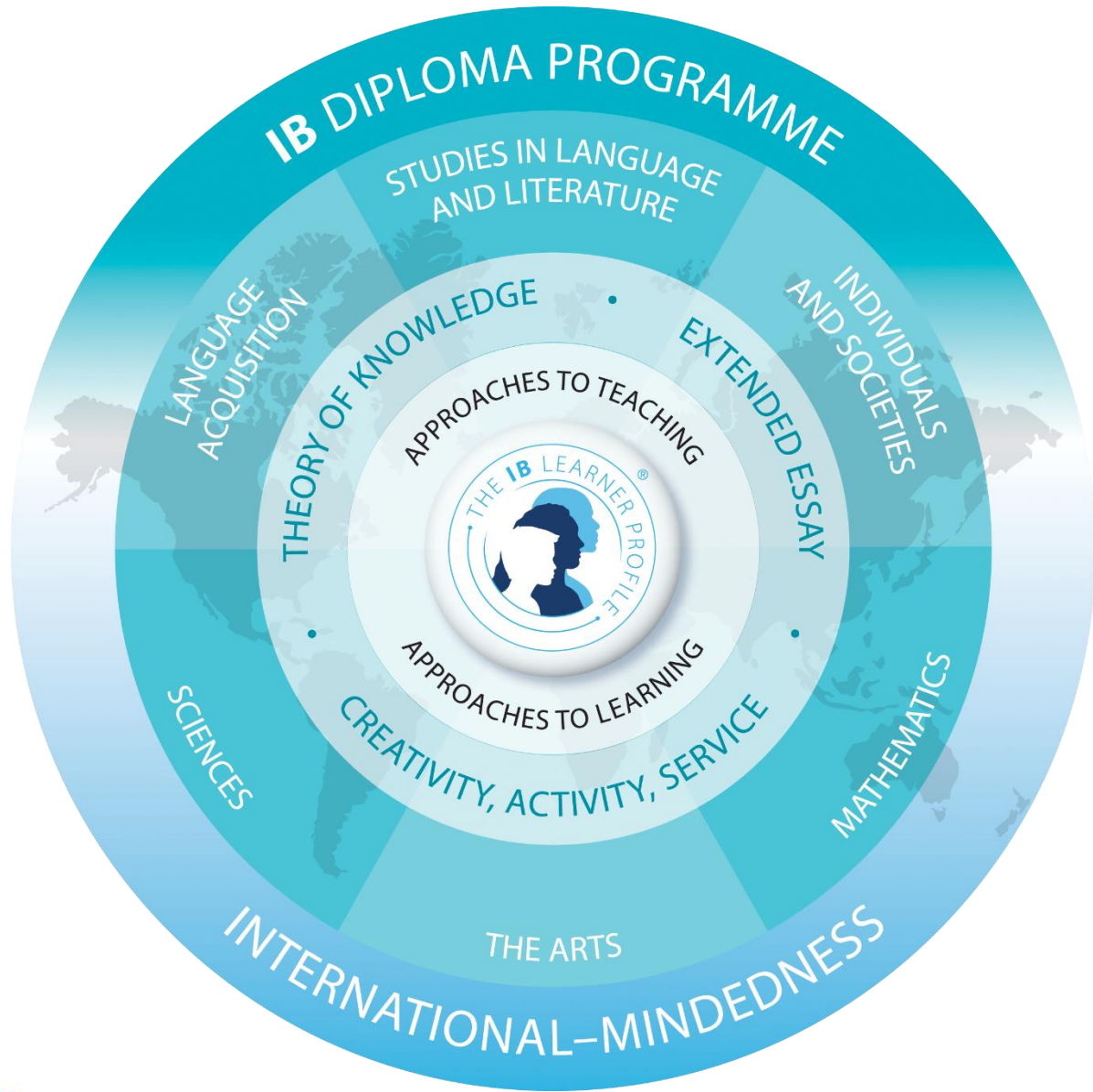
Diploma Programme (DP) Curriculum Review

The cycle involves contributions by and collaboration with

- Internal stakeholders (IB colleagues)
- External stakeholders
 - Academics and researchers
 - IB teachers and alumni
 - IB workshop leaders and developers

How to get involved

- Opportunities published in DP Coordinator's Notes
- Networking at workshops and conferences
- Being an examiner, workshop developer or workshop leader



Integration of the DP Core

Occurs regularly during curriculum development

- Collaboration with DP Core curriculum managers
 - Informal and formal meetings
 - Invitation to participate in curriculum review meetings

Collaboration with external DP Core experts

Who?

Teachers, examiners, workshop developers/leaders...

How?

Via surveys, focus groups, basecamps, email, video conferences, face-to-face development meetings...

What?

School-/course-level implementation, Core-course syllabus integration, workshop development, workshop delivery, authoring opportunities...

International-mindedness, Intercultural understanding and multilingualism in the IB DP

Central to the IB mission
and educational philosophy

Woven throughout the IB
and our practices

55 languages represented across six
different language and language
acquisition courses offered

Ability to add languages to our
language and language acquisition
courses in response to needs of
stakeholders

Supporting and promoting multilingualism

Languages offered in the DP

- 55 language A: studies in language and literature
 - Generally taken in either a student's
 - best language
 - home language
 - language of instruction of the school
 - special request languages (language A: literature)
 - 2 classical languages
 - 22 language B
 - 14 (15) language ab initio

Recent additions to DP language acquisition offerings

- Swedish ab initio (first teaching 2018)
- Danish ab initio (first teaching 2018)
- Dutch ab initio (first teaching 2019)
- and...



DP Sign Language?

Prospective DP Sign Language Course

- Occasional queries regarding offering a DP Sign Language course
- Began as a request from a U.S. school for an American Sign Language (ASL) School Based Syllabus (SBS)
- Interest expressed by numerous school for an ASL SBS pushed it outside the scope for an SBS
- Surveys conducted indicated interest for other sign languages in addition to ASL
- 18+ schools in US, UK, Japan, Australia, China
- Research was commissioned to explore viability as a standard DP course offering
- Considering it for “standard” DP course status required a more internationally-minded focus for the course

DP Sign Language course benefits

- Enables students to communicate with deaf people / members of the Deaf community
- Provides avenues for post-secondary study and/or job opportunities
- Addresses school/student needs
- Increases students' language acquisition options
- Allows IB MYP students potential for further study of Sign Language in the DP
- Provides the IB opportunity to
 - demonstrate commitment to multilingualism, intercultural understanding and international-mindedness
 - explore multi-modality (in syllabus and assessment design)

How are new DP courses born?

Part I

STAKEHOLDERS

Community

Workshops and Conferences

School Visits

Social Media

Emails

Surveys

Blogs

How are new DP courses born?

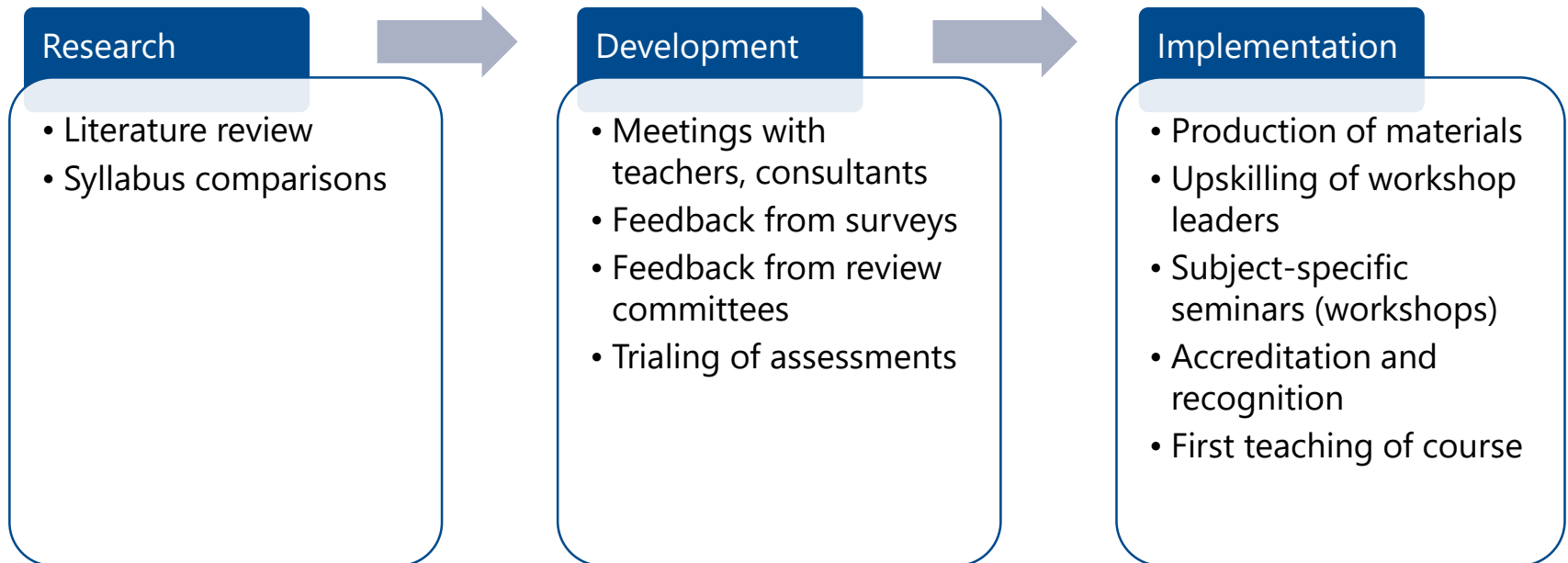
Part II

- Commission research to
 - Inform internal divisions/stakeholders of the nature of the subject
 - Investigate viability
 - Determine placement in an IB subject area
 - Identify potential issues
- Organize an internal working group
 - Collaborate on a business case
 - **Submit the business case for approval**

How are new DP courses born?

Part III

- Curriculum development process begins
 - 2-Year Research Phase
 - 3-Year Development Phase
 - 2-Year Implementation Phase



- Decision to either pilot the course or make it a “standard” offering.

Sign language course considerations

The DP sign language course would be taken as language of acquisition – not as a Language A (best/home language courses)

The DP sign language course is intended for non-deaf students

- U.S. schools already offering sign language as option in their additional language courses
- Offering sign language to deaf students would place it into the Language A area (but unable to follow existing syllabus)

DP requires study of either a modern or classical language for language acquisition

- Nature of sign language makes it unable to follow either of the above two syllabuses (i.e. cannot be “added” as language option – e.g. Arabic, French, classical Greek, Latin)

Sign language course options

Moving forward, the course is being proposed as a **sign language** course rather than specifically an American Sign Language (ASL) course. The course would

- have one syllabus and assessment model
- promote global outreach and the possibility of global uptake
- offer sign language variants (e.g. ASL, BSL, FSL)
 - based on degree of uptake of the course
 - with the possibility of adding other sign language variants to those initially available

IB DP Sign language course status

- Exploratory research was commissioned
- Internal working group was formed
- Business case was drafted
- If approved for development, curriculum development process will commence
- If course is deemed viable, first teaching is projected for autumn, 2024 (at the earliest) with first assessment of the course in May, 2026

MYP Outreach

My MYP colleague is looking for input from MYP BSL teachers! If you teach BSL to students aged 11-16 (or know someone who does), please email us at MYPdevelopment@ibo.org for more information.

